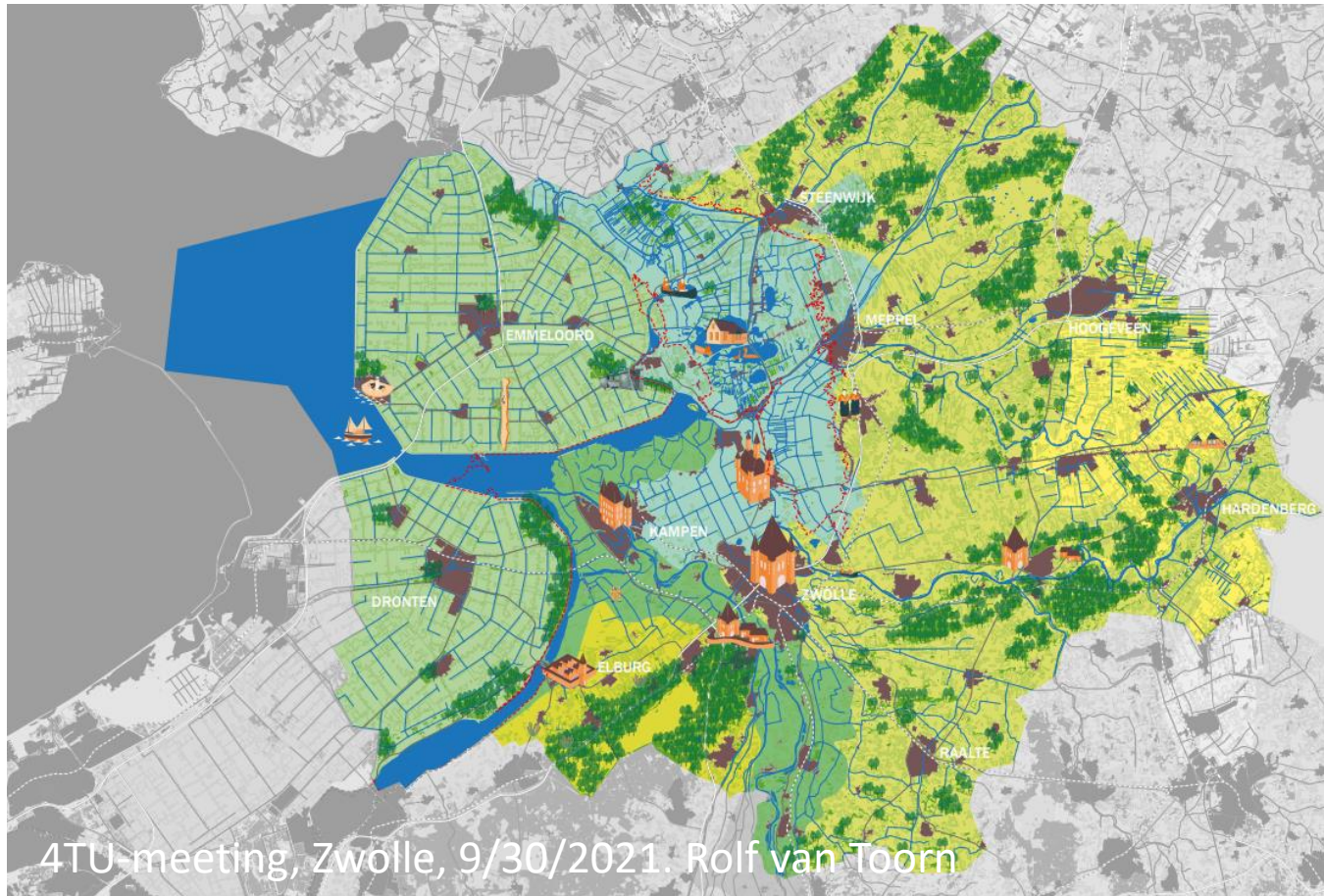


NOVI-area Region Zwolle: *climate adaptive growth*



The issue at Wijk aan Zee

Climate change, high ground-pressure, Social domain overloaded
Economic growth, living environment

A photograph of four children sitting on a grassy dune. From left to right: a girl in a pink tank top and blue jeans, a boy in a white shirt and blue jeans, a girl in a striped shirt and blue patterned pants, and a girl in a black hoodie and dark patterned pants. In the background, a large industrial facility, likely a steel plant, is visible under a cloudy sky.

'Children worried about toxics at steelplant'

Jeugdjournaal, 6 juni 2019

Respons: NOVI basics



Prioriteit 1
Ruimte voor
klimaatadaptatie en
energietransitie



Prioriteit 2
Duurzaam economisch
groeipotentieel



Prioriteit 3
Sterke en gezonde
steden en regio's



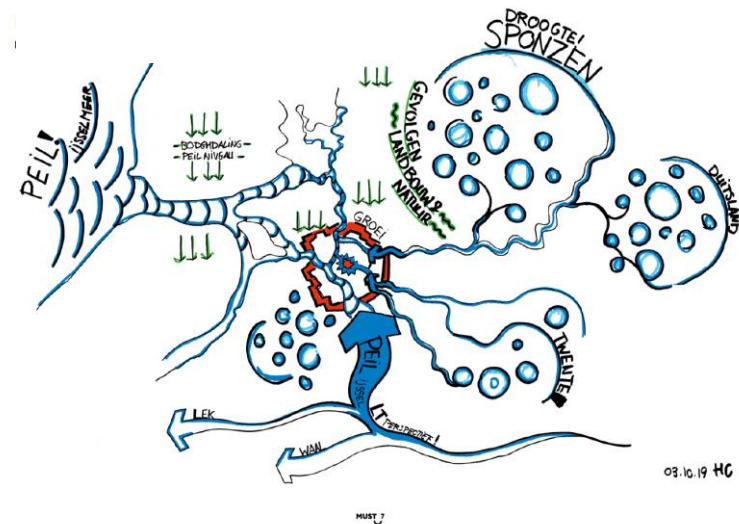
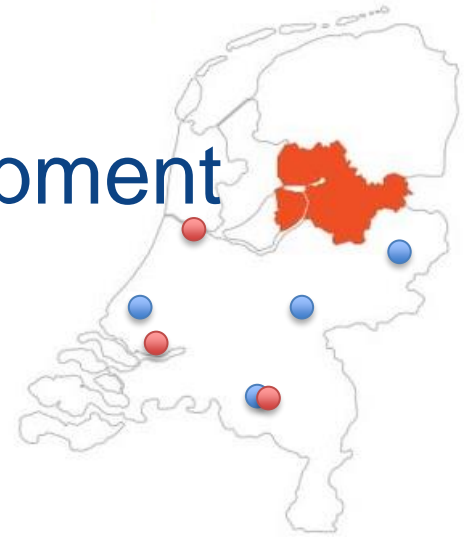
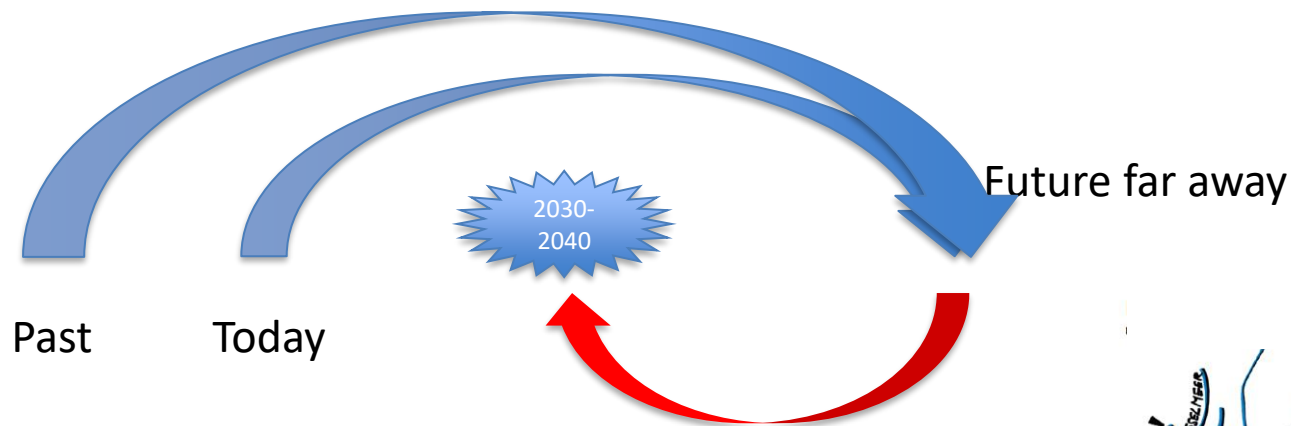
Prioriteit 4
Toekomstbestendige
ontwikkeling van het
landelijk gebied



Principles for descisionmaking

- 1. Combination of functies precedes singular functions.*
- 2. Characteristics and identity of the area are central.*
- 3. Shifting on is avoided.*

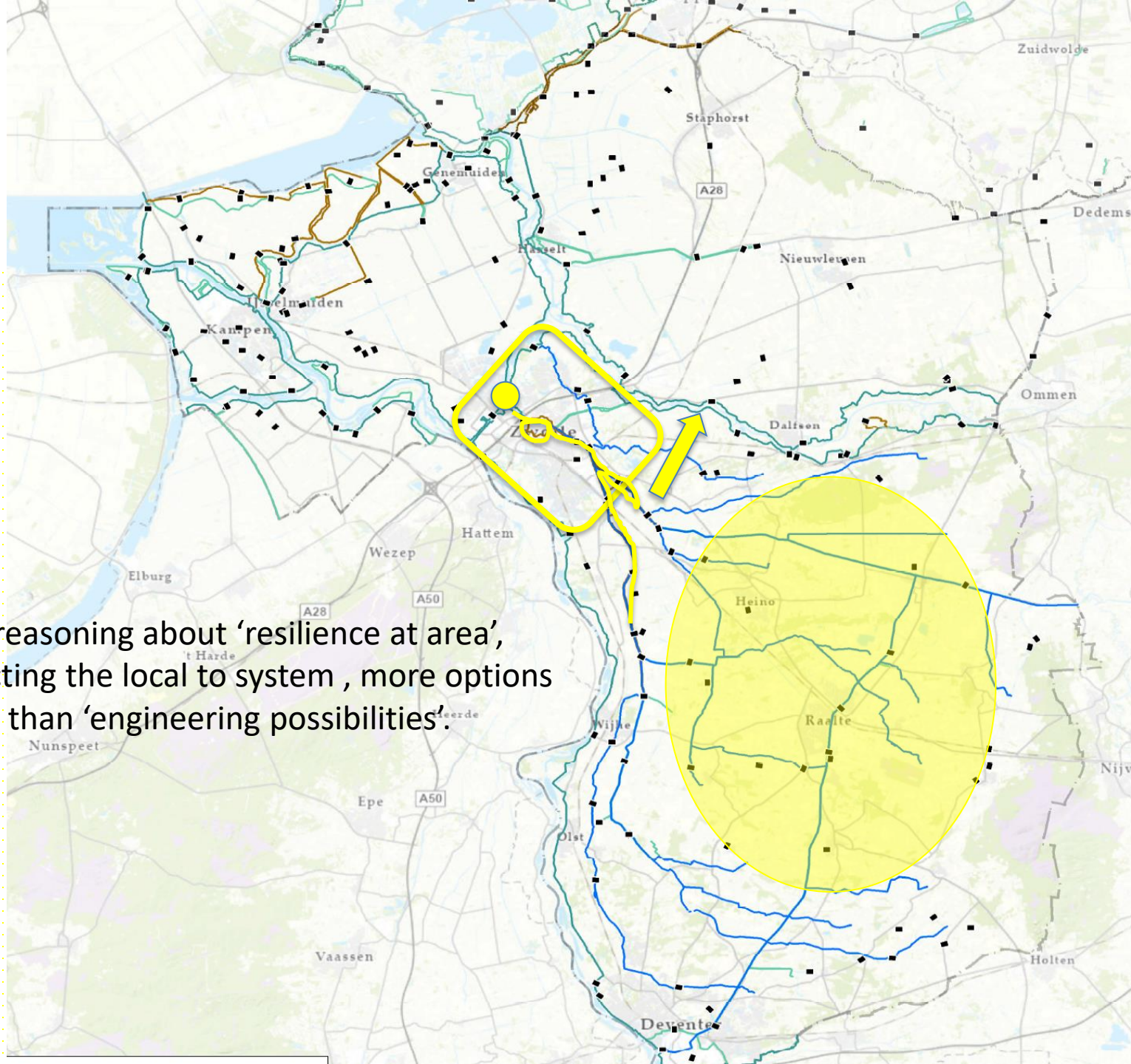
Resilience/climate adaptive development





[Regio Zwolle - Klimaatbestendige groeiregio - Engels \(vimeo.com\)](https://vimeo.com/RegioZwolle)

When reasoning about 'resilience at area',
connecting the local to system , more options
appear than 'engineering possibilities'.







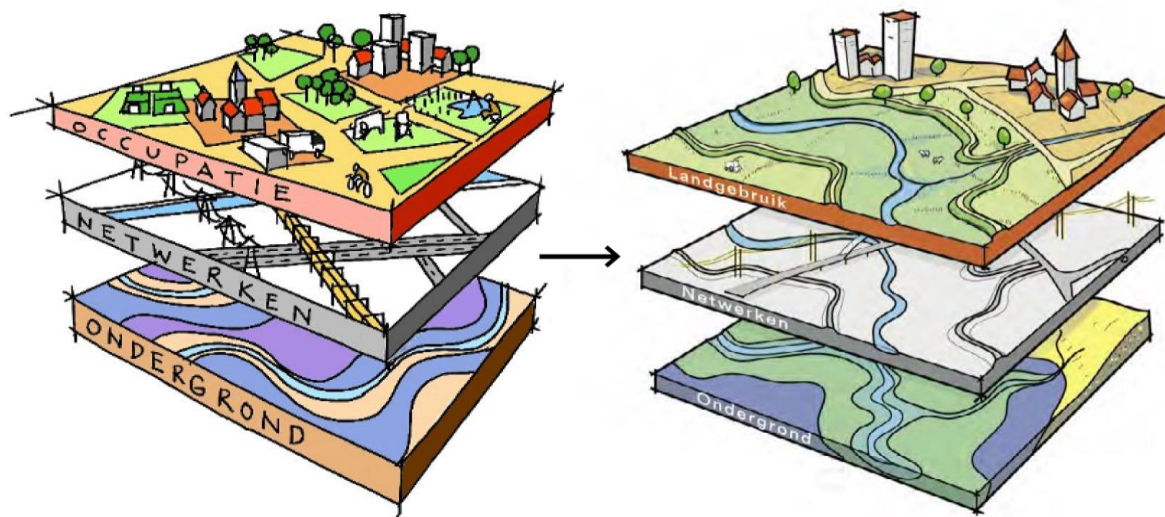
Understanding & translating from the technocratic towards the spatial planning & society

Ambition

The new helps the present to meet today's higher standards

Principles

- I Space for natural dynamics
- II Function follows the natural system
- III Resilience at area-level
- IV Connecting functions en issues
- V In early stages water is intertwined with spatial developments



Central questions

1. How can the area of the Salland Canals develop within the engineering possibilities and special planning activities for growth in balance with the climate change?
2. How do we arrange a multilevel governance structure in the cooperation between the different layers of government in the NOVI area?

